



SANDEMEYER STEEL COMPANY

We're ready to take on  
your flange challenges.



Hub-less Stainless Steel and Nickel Alloy Plate Flanges

# Sandmeyer Steel Hub-less Flanges (Machined from Plate)

## 150# Blind Plate Flanges / 150# Slip-on Plate Flanges

Nominal Pipe Size	Outside Diameter of Flange	Thickness of Flange	Diameter of Raised Face	Diameter of Bore	Number of Holes	Diameter of Holes	Diameter of Bolt Circle
1/2	3 1/2	7/16	1 3/8	.88	4	5/8	2 3/8
3/4	3 7/8	1/2	1 11/16	1.09	4	5/8	2 3/4
1	4 1/4	9/16	2	1.36	4	5/8	3 1/8
1 1/4	4 5/8	5/8	2 1/2	1.70	4	5/8	3 1/2
1 1/2	5	11/16	2 7/8	1.95	4	5/8	3 7/8
2	6	3/4	3 5/8	2.44	4	3/4	4 3/4
2 1/2	7	7/8	4 1/8	2.94	4	3/4	5 1/2
3	7 1/2	15/16	5	3.57	4	3/4	6
3 1/2	8 1/2	15/16	5 1/2	4.07	8	3/4	7
4	9	15/16	6 3/16	4.57	8	3/4	7 1/2
5	10	15/16	7 5/16	5.66	8	7/8	8 1/2
6	11	1	8 1/2	6.72	8	7/8	9 1/2
8	13 1/2	1 1/8	10 5/8	8.72	8	7/8	11 3/4
10	16	1 3/16	12 3/4	10.88	12	1	14 1/4
12	19	1 1/4	15	12.88	12	1	17
14	21	1 3/8	16 1/4	14.14	12	1 1/8	18 3/4
16	23 1/2	1 7/16	18 1/2	16.16	16	1 1/8	21 1/4
18	25	1 9/16	21	18.18	16	1 1/4	22 3/4
20	27 1/2	1 11/16	23	20.20	20	1 1/4	25
24	32	1 7/8	27 1/4	24.25	20	1 3/8	29 1/2

## 300# Blind Plate Flanges / 300# Slip-on Plate Flanges

1/2	3 3/4	9/16	1 3/8	.88	4	5/8	2 5/8
3/4	4 5/8	5/8	1 11/16	1.09	4	3/4	3 1/4
1	4 7/8	11/16	2	1.36	4	3/4	3 1/2
1 1/4	5 1/4	3/4	2 1/2	1.70	4	3/4	3 7/8
1 1/2	6 1/8	13/16	2 7/8	1.95	4	7/8	4 1/2
2	6 1/2	7/8	3 5/8	2.44	8	3/4	5
2 1/2	7 1/2	1	4 1/8	2.94	8	7/8	5 7/8
3	8 1/4	1 1/8	5	3.57	8	7/8	6 5/8
3 1/2	9	1 3/16	5 1/2	4.07	8	7/8	7 1/4
4	10	1 1/4	6 3/16	4.57	8	7/8	7 7/8
5	11	1 3/8	7 5/16	5.66	8	7/8	9 1/4
6	12 1/2	1 7/16	8 1/2	6.72	12	7/8	10 5/8
8	15	1 5/8	10 5/8	8.72	12	1	13
10	17 1/2	1 7/8	12 3/4	10.88	16	1 1/8	15 1/4
12	20 1/2	2	15	12.88	16	1 1/4	17 3/4
14	23	2 1/8	16 1/4	14.14	20	1 1/4	20 1/4
16	25 1/2	2 1/4	18 1/2	16.16	20	1 3/8	22 1/2
18	28	2 3/8	21	18.18	24	1 3/8	24 3/4
20	30 1/2	2 1/2	23	20.20	24	1 3/8	27
24	36	2 3/4	27 1/4	24.25	24	1 5/8	32

The 1/16" raised face is included in the thickness. Flat face available on request. \*Slip-on Flange only.

## Cut piping installation costs without cutting quality or corners.

**Ready to cut the cost of your piping installations?** Then you're ready

for Sandmeyer Steel's hub-less custom flanges. We have the raw materials,



CUSTOM FLANGE

technology and more than 100 different machine tools to create and deliver virtually any shape, size and drilling configuration that you need. Because it's what we've done

day-in, day-out, for three generations, we can produce top quality

cost-effective parts.

**With 15 million pounds of inventory on site,** we can take care of all

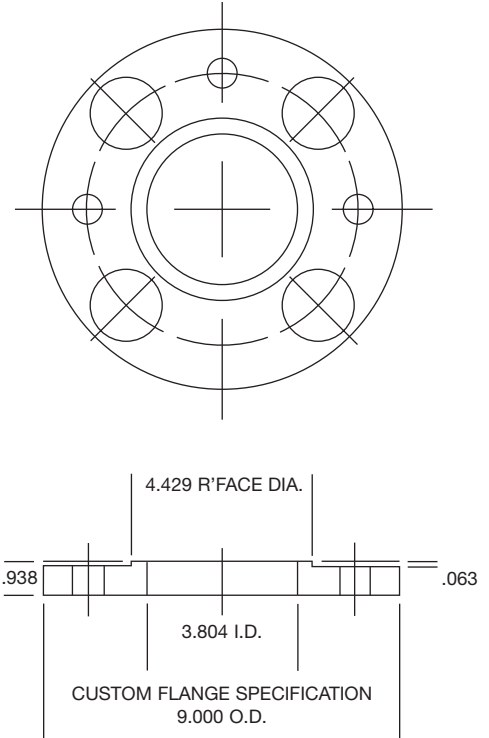
your flange needs — large quantities or small. We always inventory standard

stainless steel grades including 304, 304L, 316 and 316L, as well as non-

standard grades including 303, 304H, 309, 310, 317L, 317LM, 321, 347,

410 and 2205. Sandmeyer's also your source for nickel alloy plate, with alloys

400, 600, 625, 800H 800AT and C276 all in-stock, all the time.

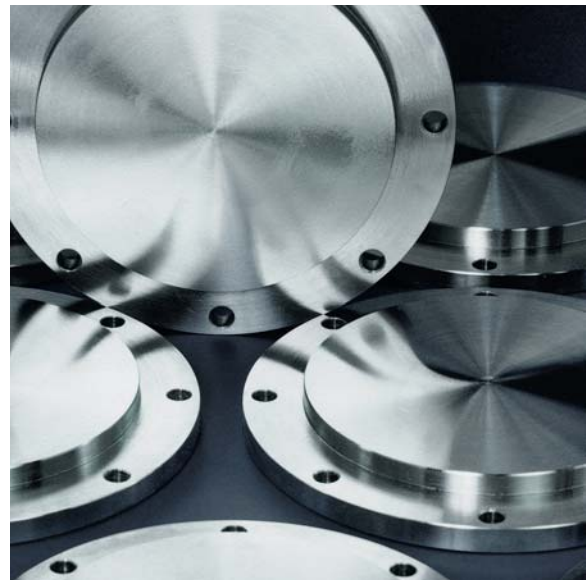


STANDARD FLANGE

**We have the right tools for the right job — so should you.**

***The country's leading independent producer of stainless steel and nickel alloy plate products.***

In 1952, Sandmeyer Steel Company was founded as an independent, family-owned business, a tradition we proudly continue today. Our facilities cover more than 20 acres; our on-site plate and slab inventories total more than 15 million pounds. As always, we're focused on what we do best: producing top quality stainless steel and nickel alloy plate products.



**View our complete stock list at [www.SandmeyerSteel.com](http://www.SandmeyerSteel.com).**



**SANDMEYER STEEL COMPANY**  
ONE SANDMEYER LANE • PHILADELPHIA, PA 19116-3598  
800-523-3663 • FAX 215-677-1430 • [www.SandmeyerSteel.com](http://www.SandmeyerSteel.com)

